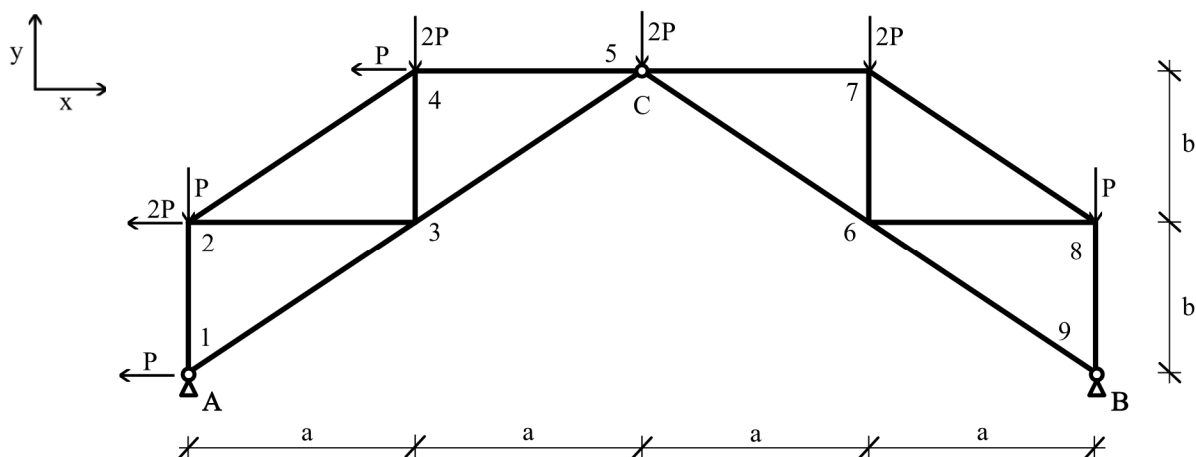


4. Calculate the bar forces of the truss! (9 points)



Data	P [kN]	a [m]	b [m]
Example	5	3	2
Individual			

Results	Example	Individual	Results	Example	Individual	Results	Example	Individual
A_y [kN]	23,33		2-3 [kN]	12,5		5-7 [kN]	-7,5	
A_x [kN]	30		2-4 [kN]	-3		6-7 [kN]	-5	
B_y [kN]	16,67		3-4 [kN]	-8,33		6-8 [kN]	7,5	
B_x [kN]	-10		3-5 [kN]	-15,02		6-9 [kN]	-12,02	
1-2 [kN]	-6,67		4-5 [kN]	2,5		7-8 [kN]	-9,01	
1-3 [kN]	-30,05		5-6 [kN]	-3		8-9 [kN]	-10	

The quantities indicated by grey colour should be given a signed value!

Supports: positive \uparrow , \rightarrow . Compressed bar: -, tension bar: +.