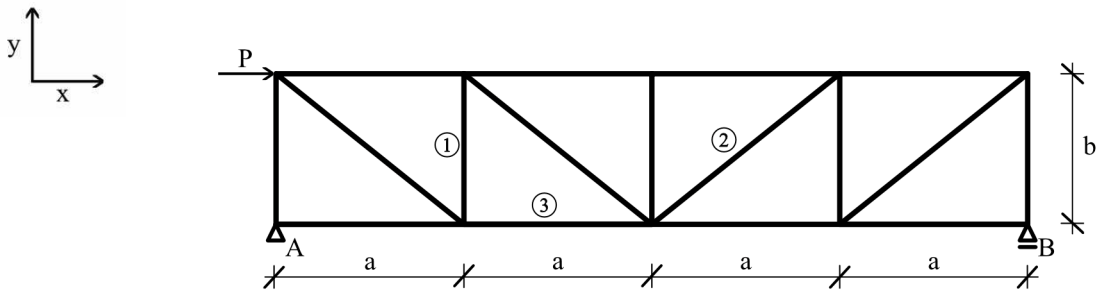


3. Calculate the forces in the indicated bars of the truss! (7 points)



Data	P [kN]	a [m]	b [m]
Example	10	3	1,5
Individual			

Results	A_y [kN]	A_x [kN]	B_y [kN]	S_1 [kN]	S_2 [kN]	S_3 [kN]
Example	-1,25	-10	1,25	1,25	2,80	7,50
Individual						

The quantities indicated by grey colour should be given a signed value!

Supports: positive \uparrow , \rightarrow . Compressed bar: -, tension bar: +.