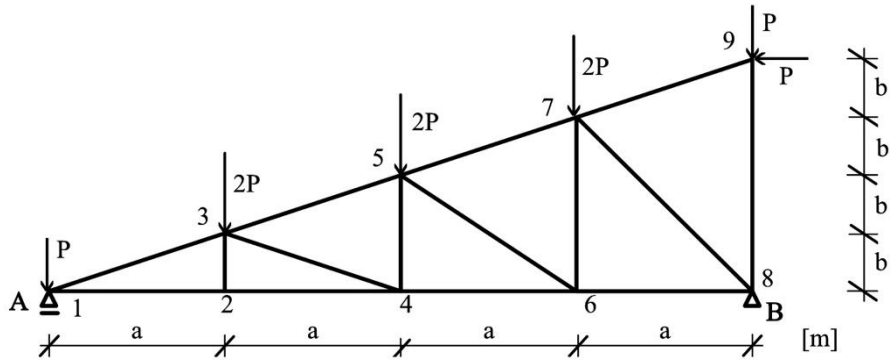


**4. Calculate the bar forces of the truss! (14 points)**



Data	$P$ [kN]	$a$ [m]	$b$ [m]
Example	10	3	1
Individual			

All the results should be given as signed values.

Supports: positive  $\uparrow$ ,  $\rightarrow$ . Compressed bar: -, tensile bar +.

Results	$A_y$ [kN]	$B_y$ [kN]	$B_x$ [kN]	1-2 [kN]	1-3 [kN]	2-3 [kN]
Example	+43,33	+36,67	+10	+100	-105,4	0
Individual						

Results	2-4 [kN]	3-4 [kN]	3-5 [kN]	4-5 [kN]	4-6 [kN]	5-6 [kN]
Example	+100	-31,62	-73,79	+10	+70	-36,06
Individual						

Results	5-7 [kN]	6-7 [kN]	6-8 [kN]	7-9 [kN]	7-8 [kN]	8-9 [kN]
Example	-42,16	+20	+40	-10,54	-42,43	-6,67
Individual						