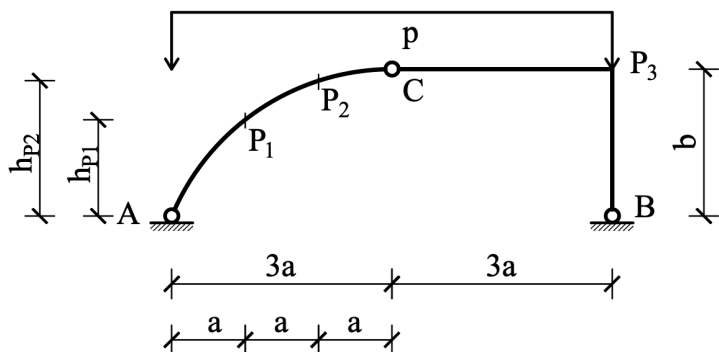


4. Determine the bending moment diagram of the structure assuming that A-C is a circular segment! (5 + 5 points)

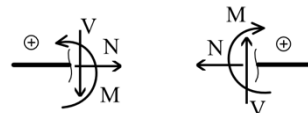


Data:

p [kN/m]	a [m]	b [m]

Results:

The data marked by grey colour should be given as a signed value. Positive support reactions: $\uparrow \rightarrow \curvearrowright$.



A_x [kN]	A_y [kN]	B_x [kN]	B_y [kN]
R [m]	h_{p1} [m]	h_{p2} [m]	
M_{P1} [kNm]	M_{P2} [kNm]	M_{P3} [kNm]	b_{C-P3} [kNm]

Free-body diagram:

M

